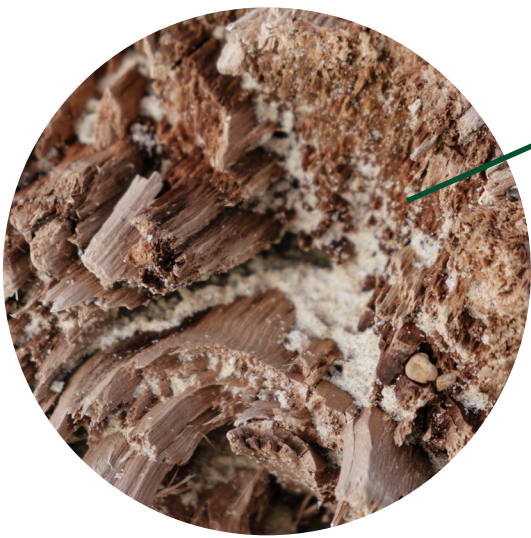


# Do You Have Termites?

This guide can help you determine if termites are an issue on your property.



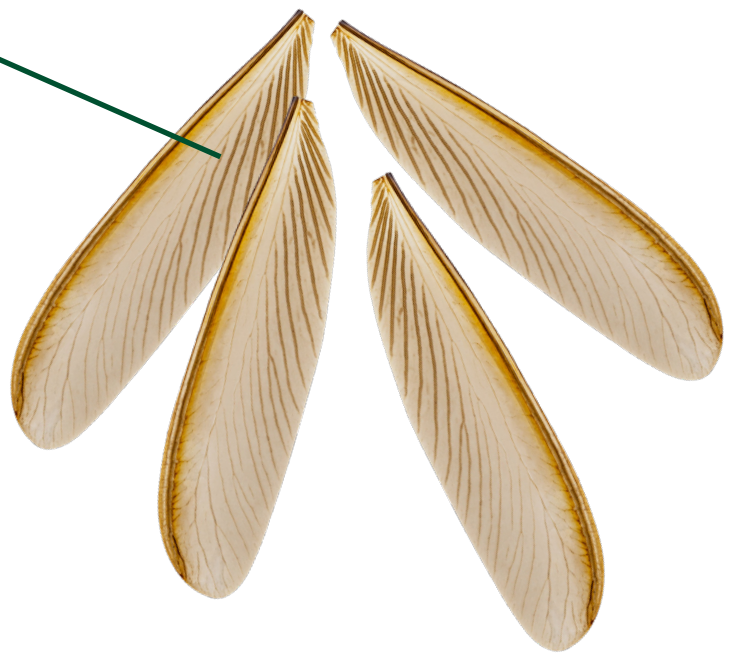
## Sawdust? Nope, that's poop!

Termites bore through wood by eating it. Naturally, the end result of digested wood looks like, well... wood.

If sawdust-like remnants show up in a place where sawdust can't be, there's a strong chance it could be termite droppings.

## You Can't Wing It

Swarmers, also known as reproductives, are young female and male winged termites. In the springtime, after the last freeze, termite swarmers will emerge from their nest to mate and search for a new location to start a colony, which typically includes our homes. As such, termite swarmers' discarded wings can be found near windowsills and doors, and are often the first (and only outwardly visible) sign of a termite problem.<sup>1</sup> To be sure termites are the issue, look for two sets of wings all the same size.



## Painted Into A Corner

Uneven or bubbling paint is often a sign of moisture build up, which could mean one of two things: water damage or termites.<sup>2</sup>

## Knock Knock

Termites tend to eat wood from the inside out, so wood that sounds hollow when tapped often signifies a termite infestation. Homeowners should also look for blistering pieces of wood.<sup>2</sup>



<sup>1</sup>: <https://www.pestworld.org/news-hub/pest-articles/list-top-5-signs-of-a-termite-infestation/>  
<sup>2</sup>: <https://www.graduatepestsolutions.com/2018/03/29/know-the-signs-of-a-termite-infestation/>

